

A12 Chelmsford to A120 widening scheme

TR010060

6.2 Environmental Statement, Figure 13.3, Version PO2

Rule 5(2)(a)

Planning Act 2008
Infrastructure Planning (Applications: Prescribed
Forms and Procedure) Regulations 2009

Volume 6

June 2023

Infrastructure Planning

Planning Act 2008

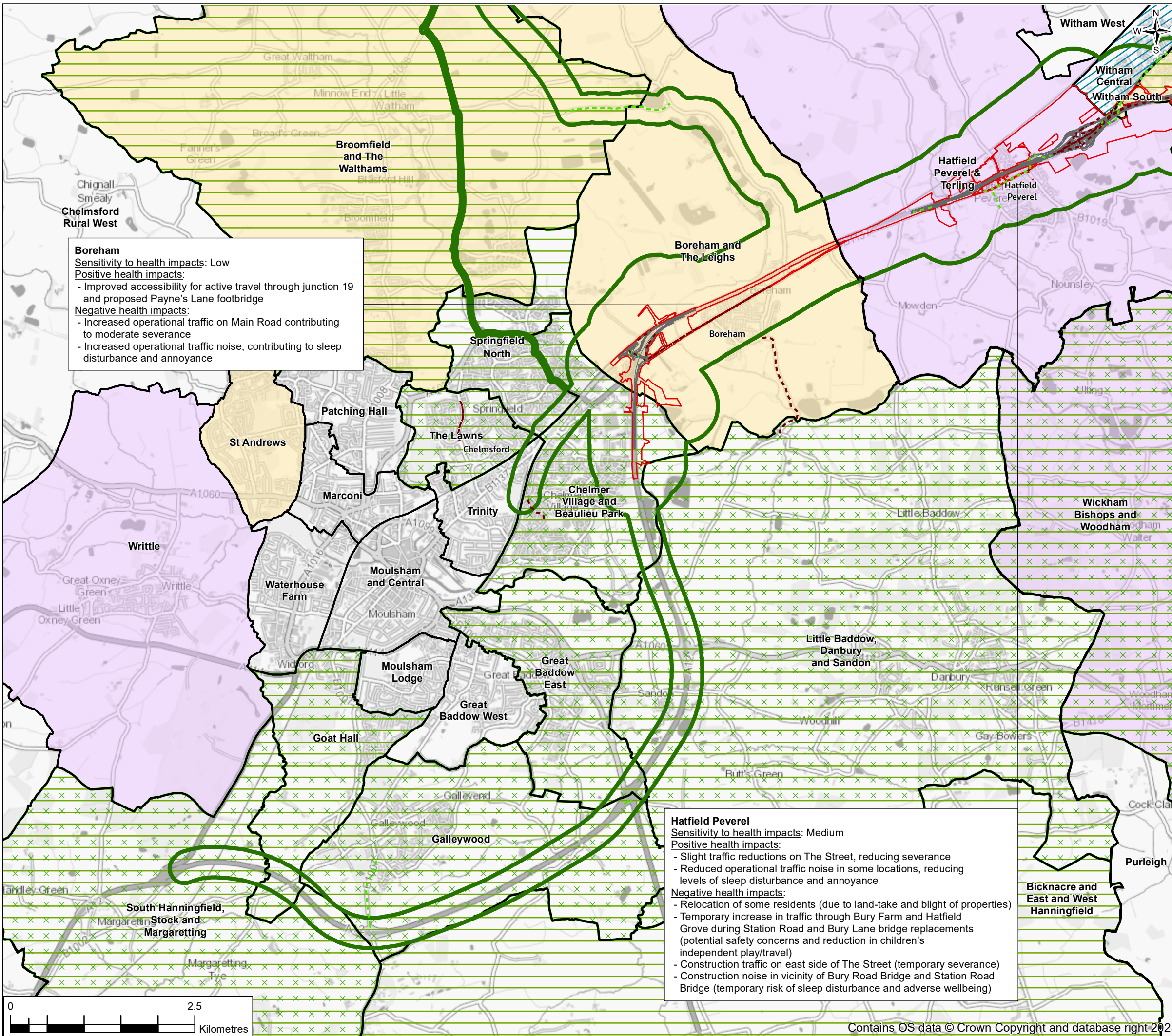
A12 Chelmsford to A120 widening scheme Development Consent Order 202[]

Environmental Statement, Figure 13.3, Version PO2

Regulation Number	Rule 5(2)(a)
Planning Inspectorate Scheme Reference	TR010060
Application Document Reference	TR010060/APP/6.2
Author	A12 Project Team and National Highways

Version	Date	Status of Version
Rev 1	August 2022	DCO Application
Rev 2	June 2023	Deadline 6

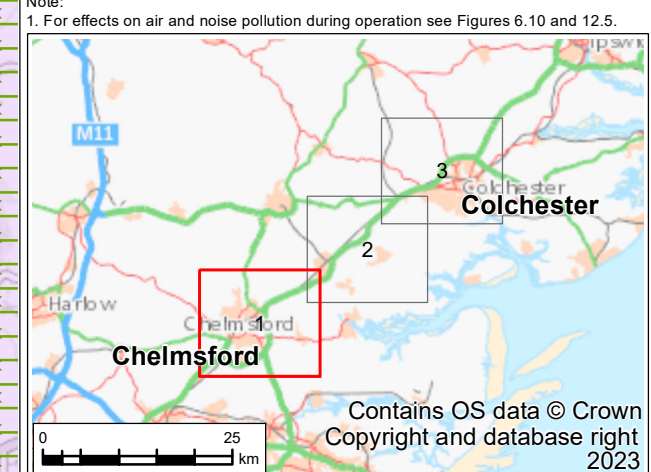
FIGURE 13.3



Boreham
 Sensitivity to health impacts: Low
 Positive health impacts:
 - Improved accessibility for active travel through junction 19 and proposed Payne's Lane footbridge
 Negative health impacts:
 - Increased operational traffic on Main Road contributing to moderate severance
 - Increased operational traffic noise, contributing to sleep disturbance and annoyance

Hatfield Peverel
 Sensitivity to health impacts: Medium
 Positive health impacts:
 - Slight traffic reductions on The Street, reducing severance
 - Reduced operational traffic noise in some locations, reducing levels of sleep disturbance and annoyance
 Negative health impacts:
 - Relocation of some residents (due to land-take and blight of properties)
 - Temporary increase in traffic through Bury Farm and Hatfield Grove during Station Road and Bury Lane bridge replacements (potential safety concerns and reduction in children's independent play/travel)
 - Construction traffic on east side of The Street (temporary severance)
 - Construction noise in vicinity of Bury Road Bridge and Station Road Bridge (temporary risk of sleep disturbance and adverse wellbeing)

- Legend**
- Order Limits
 - Proposed Scheme
 - Human health study area
 - District boundary
 - Ward boundary
- Change in AAD24 traffic flows**
- Increase
 - Decrease
- Health Profile**
- % population with long term illness or disability – significantly worse than England average
 - Deaths from respiratory diseases (SMR) – significantly worse than England average
 - Deaths from respiratory diseases (SMR) – significantly better than England average
 - Emergency hospital admissions for COPD (SAR) – significantly worse than England average
 - Emergency hospital admissions for COPD (SAR) – significantly better than England average
- Population aged 0-15 (%)**
- Highest quintile
- Population aged over 65 (%)**
- Highest quintile



P02	08/06/23	Revision of the symbology and key	JC	MO	JW	KT
P01	22/02/22	For DCO application	JC	MO	JW	SG
Rev.	Rev. Date	Purpose of revision	Drawn	Check'd	Rev'd	Appr'd

Development Consent Order Drawing Number: TR010060/APP/6.2
 APFP Regulation: Regulation 5(2)(a)



Project: REGIONAL DELIVERY PARTNERSHIP
 A12 CHELMSFORD TO A120 WIDENING SCHEME

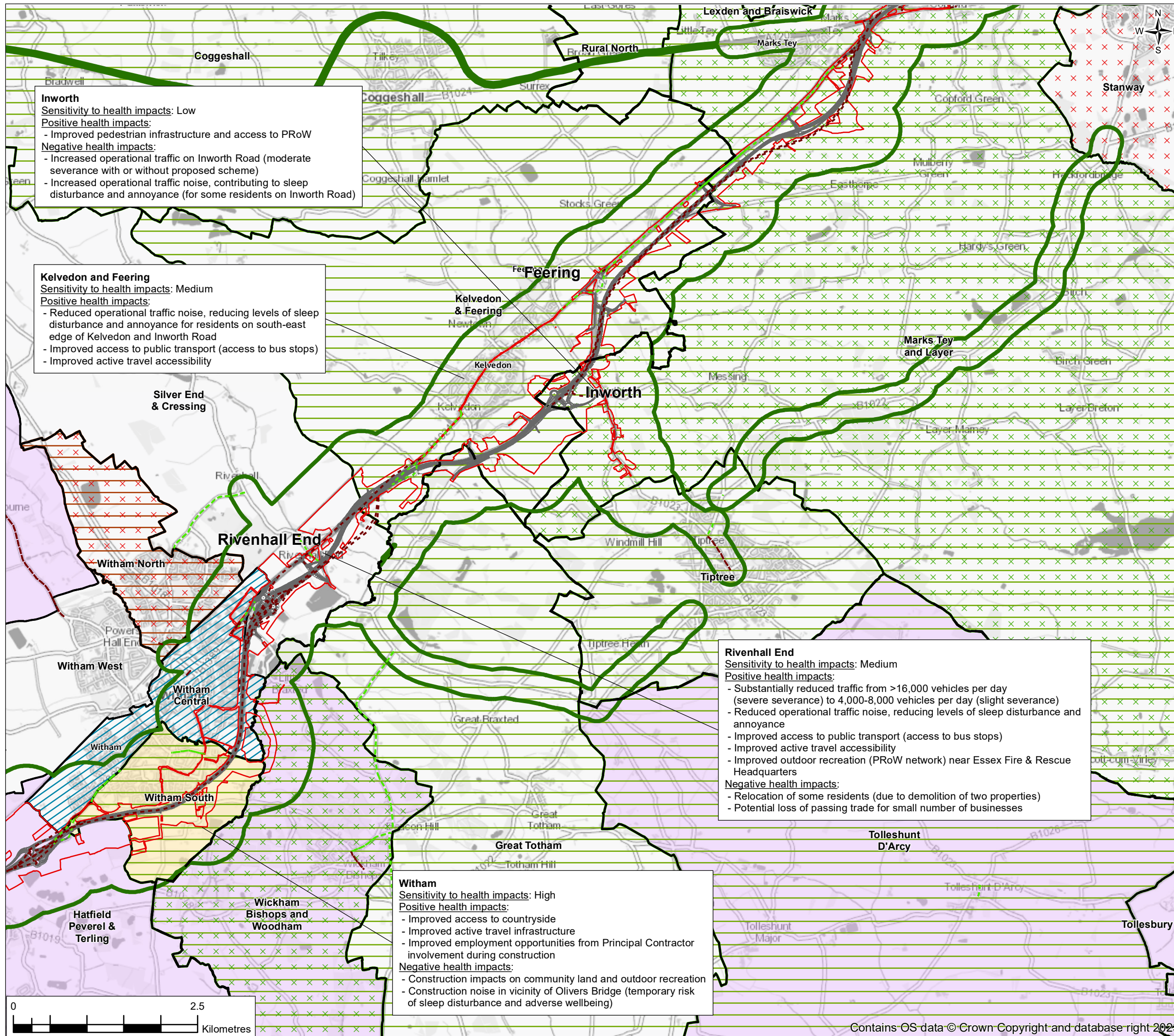
Drawing Title: ENVIRONMENTAL STATEMENT
 HUMAN HEALTH BASELINE AND IMPACTS
 SHEET 1 OF 3

Drawing Status	S4 - SUITABLE FOR STAGE APPROVAL				
Scale @ A3	1:50000	DO NOT SCALE			
Jacobs No.	B36601D1	Rev P02			
Client No.	HE551497				
Drawing Number	HE551497-JAC-LDC-SCHW-SK-GI-0139				

© Copyright 2023 Jacobs U.K. Limited. The concepts and information contained in this document are the property of Jacobs. Use or copying of this document in whole or in part without the written permission of Jacobs constitutes an infringement of copyright. Limitation: This drawing has been prepared on behalf of, and for the exclusive use of Jacobs' Client, and is subject to, and issued in accordance with, the provisions of the contract between Jacobs and the Client. Jacobs accepts no liability or responsibility whatsoever for, or in respect of, any use of, or reliance upon, this drawing by any third party.



FIGURE 13.3



Inworth
 Sensitivity to health impacts: Low
 Positive health impacts:
 - Improved pedestrian infrastructure and access to PRoW
 Negative health impacts:
 - Increased operational traffic on Inworth Road (moderate severance with or without proposed scheme)
 - Increased operational traffic noise, contributing to sleep disturbance and annoyance (for some residents on Inworth Road)

Kelvedon and Feering
 Sensitivity to health impacts: Medium
 Positive health impacts:
 - Reduced operational traffic noise, reducing levels of sleep disturbance and annoyance for residents on south-east edge of Kelvedon and Inworth Road
 - Improved access to public transport (access to bus stops)
 - Improved active travel accessibility

Rivenhall End
 Sensitivity to health impacts: Medium
 Positive health impacts:
 - Substantially reduced traffic from >16,000 vehicles per day (severe severance) to 4,000-8,000 vehicles per day (slight severance)
 - Reduced operational traffic noise, reducing levels of sleep disturbance and annoyance
 - Improved access to public transport (access to bus stops)
 - Improved active travel accessibility
 - Improved outdoor recreation (PRoW network) near Essex Fire & Rescue Headquarters
 Negative health impacts:
 - Relocation of some residents (due to demolition of two properties)
 - Potential loss of passing trade for small number of businesses

Witham
 Sensitivity to health impacts: High
 Positive health impacts:
 - Improved access to countryside
 - Improved active travel infrastructure
 - Improved employment opportunities from Principal Contractor involvement during construction
 Negative health impacts:
 - Construction impacts on community land and outdoor recreation
 - Construction noise in vicinity of Olivers Bridge (temporary risk of sleep disturbance and adverse wellbeing)

Legend

- Order Limits
- Proposed Scheme
- Human health study area
- District boundary
- Ward boundary

Change in AADT24 traffic flows

- Increase
- Decrease

Health Profile

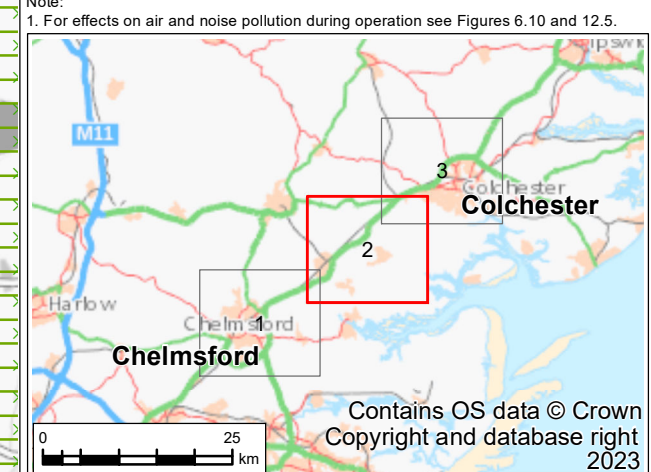
- % population with long term illness or disability – significantly worse than England average
- Deaths from respiratory diseases (SMR) – significantly worse than England average
- Deaths from respiratory diseases (SMR) – significantly better than England average
- Emergency hospital admissions for COPD (SAR) – significantly worse than England average
- Emergency hospital admissions for COPD (SAR) – significantly better than England average

Population aged 0-15 (%)

- Highest quintile

Population aged over 65 (%)

- Highest quintile



P02	08/06/23	Revision of the symbology and key	JC	MO	JW	KT
P01	22/02/22	For DCO application	JC	MO	JW	SG
Rev.	Rev. Date	Purpose of revision	Drawn	Check'd	Rev'd	Appr'd

Development Consent Order Drawing Number: TR010060/APP/6.2
 APFP Regulation: Regulation 5(2)(a)



Project
 REGIONAL DELIVERY PARTNERSHIP
 A12 CHELMSFORD TO A120 WIDENING SCHEME

Drawing Title
 ENVIRONMENTAL STATEMENT
 HUMAN HEALTH BASELINE AND IMPACTS
 SHEET 2 OF 3

Drawing Status	S4 - SUITABLE FOR STAGE APPROVAL		
Scale @ A3	1:50000	DO NOT SCALE	
Jacobs No.	B36601D1	Rev P02	
Client No.	HE551497		
Drawing Number	HE551497-JAC-LDC-SCHW-SK-GI-0140		

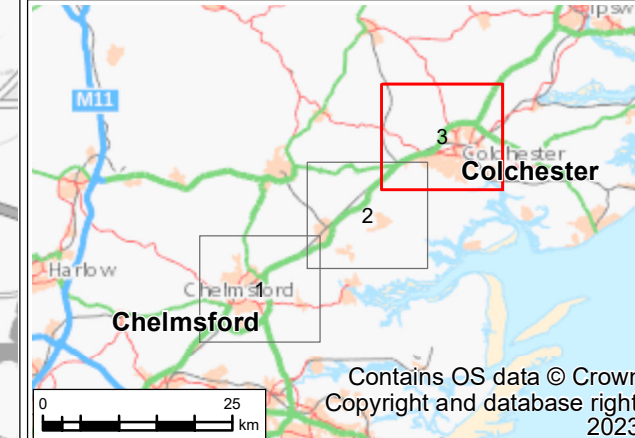
© Copyright 2023 Jacobs U.K. Limited. The concepts and information contained in this document are the property of Jacobs. Use or copying of this document in whole or in part without the written permission of Jacobs constitutes an infringement of copyright. This drawing has been prepared on behalf of, and for the exclusive use of Jacobs' Client, and is subject to, and issued in accordance with, the provisions of the contract between Jacobs and the Client. Jacobs accepts no liability or responsibility whatsoever for, or in respect of, any use of, or reliance upon, this drawing by any third party.

FIGURE 13.3

Marks Tey and Copford
 Sensitivity to health impacts: Low
 Positive health impacts:
 - Improved active travel infrastructure and accessibility
 - Overall reduced operational traffic noise, reducing levels of sleep disturbance and annoyance for residents on London Road, Marks Tey
 Negative health impacts:
 - Construction noise in vicinity of London Road (temporary risk of sleep disturbance and adverse wellbeing)
 - Construction traffic on and around junction 25 (temporary risk of adverse mental wellbeing)
 - Reduced outdoor recreational amenity and access to greenspace from proposed new A12 alignment south of Marks Tey
 - Increased day-time traffic noise for residents on B1408 London Road, Copford with likely increase in noise related annoyance

- Legend**
- Order Limits
 - Proposed Scheme
 - Human health study area
 - District boundary
 - Ward boundary
- Change in AADT24 traffic flows**
- Increase
 - Decrease
- Health Profile**
- % population with long term illness or disability – significantly worse than England average
 - Deaths from respiratory diseases (SMR) – significantly worse than England average
 - Deaths from respiratory diseases (SMR) – significantly better than England average
 - Emergency hospital admissions for COPD (SAR) – significantly worse than England average
 - Emergency hospital admissions for COPD (SAR) – significantly better than England average
- Population aged 0-15 (%)**
- Highest quintile
- Population aged over 65 (%)**
- Highest quintile

Note:
 1. For effects on air and noise pollution during operation see Figures 6.10 and 12.5.



P02	08/06/23	Revision of the symbology and key	JC	MO	JW	KT
P01	22/02/22	For DCO application	JC	MO	JW	SG
Rev.	Rev. Date	Purpose of revision	Drawn	Check'd	Rev'd	Appr'd
Development Consent Order Drawing Number: TR010060/APP/6.2			APFP Regulation: Regulation 5(2)(a)			



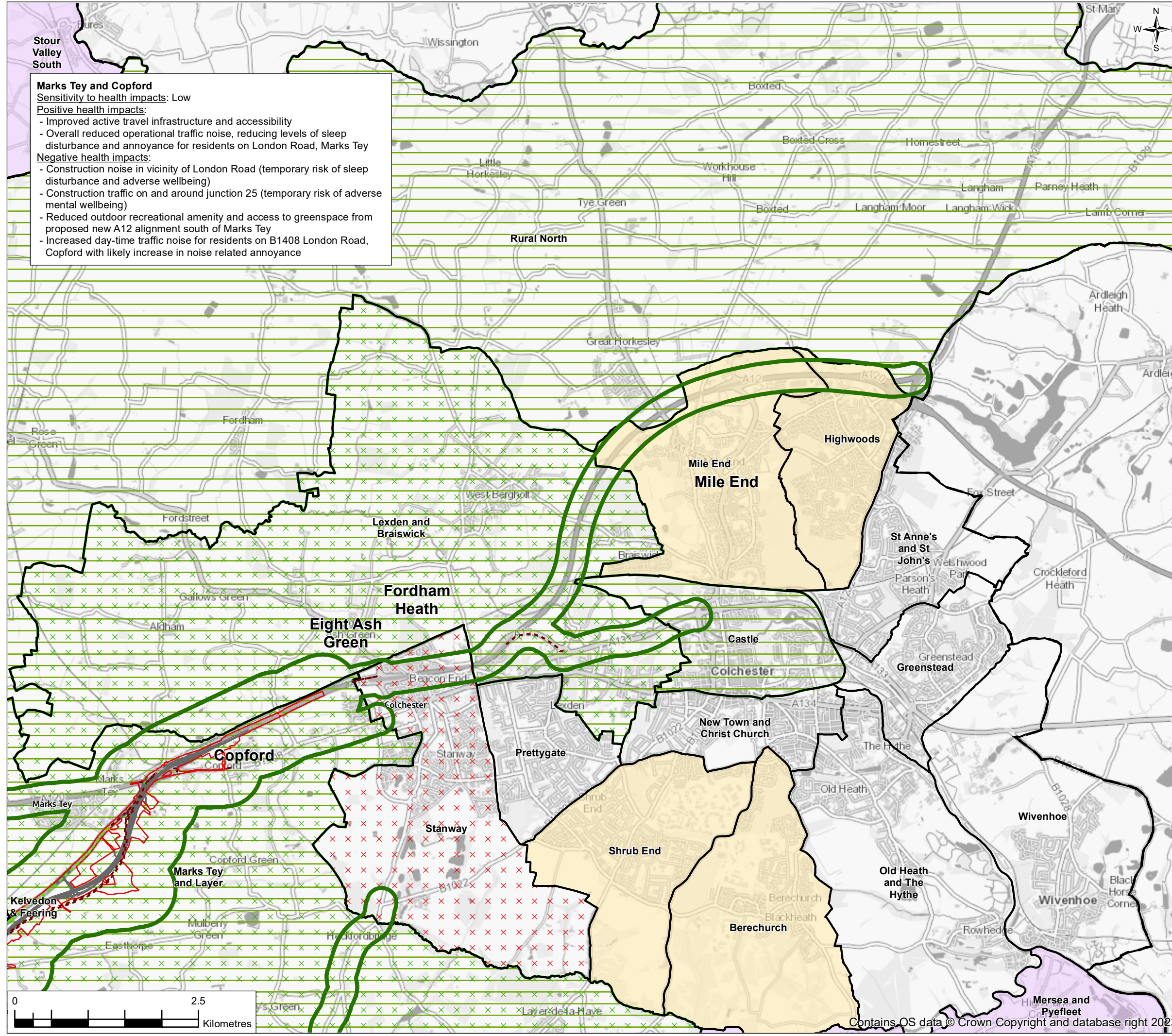
Client: **national highways**

Project: **REGIONAL DELIVERY PARTNERSHIP
 A12 CHELMSFORD TO A120 WIDENING SCHEME**

Drawing Title: **ENVIRONMENTAL STATEMENT
 HUMAN HEALTH BASELINE AND IMPACTS
 SHEET 3 OF 3**

Drawing Status	S4 - SUITABLE FOR STAGE APPROVAL					
Scale @ A3	1:50000					DO NOT SCALE
Jacobs No.	B36601D1					Rev
Client No.	HE551497					P02
Drawing Number	HE551497-JAC-LDC-SCHW-SK-GI-0141					

© Copyright 2023 Jacobs U.K. Limited. The concepts and information contained in this document are the property of Jacobs. Use or copying of this document in whole or in part without the written permission of Jacobs constitutes an infringement of copyright. Limitation: This drawing has been prepared on behalf of, and for the exclusive use of Jacobs' Client, and is subject to, and issued in accordance with, the provisions of the contract between Jacobs and the Client. Jacobs accepts no liability or responsibility whatsoever for, or in respect of, any use of, or reliance upon, this drawing by any third party.



Contains OS data © Crown Copyright and database right 2023